

Egg Noodles with Whole Grain

Pack Size: 4/3 lb.



Made with whole egg and enriched wheat and semolina flour for a healthy lifestyle. Our precooked egg noodles contain 51% whole grain.



Product Preparation:

Add frozen precooked noodles to boiling water, broth, soup or stew and cook until heated through (3 to 5 minutes). Or use frozen precooked noodles directly in a casserole recipe in place of other cooked noodles. Adjust bake time to allow for frozen noodles.

Case GTIN	Shelf Life
10041308310337	10041308310337
Package Format	Servings per Case
Poly Bag	About 38
Storage	

Keep Frozen

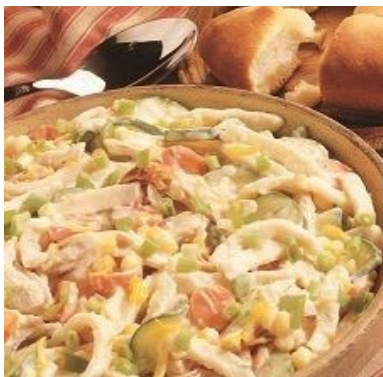
Operator Benefits:

- Quality with convenience - prep only what is needed and keep the rest frozen!
- Little or no wasted product
- Easy menu extensions
- Consistently al dente results every time
- Labor reduction - saves \$\$

Recipes



Blackened Salmon with Asiago Penne



Turkey Primavera

Visit our Recipe & Inspiration Section on MarzettiFoodservice.com for recipe details!

Egg Noodles with Whole Grain

Pack Size: 4/3 lb.

Nutrition Facts		
About 38 serving per container		
Serving Size	1 cup (140g)	
Amount per Serving		
Calories	230	
% Daily Value*		
Total Fat	2.5 g	3%
Saturated Fat	0.5 g	4%
Trans Fat	0 g	
Cholesterol	55 mg	18%
Sodium	35 mg	2%
Total Carbohydrate	41 g	15%
Dietary Fiber	4 g	14%
Total Sugars	0 g	
Includes 0 g Added Sugars		0%
Protein	9 g	
Vitamin D	0 mcg	0%
Calcium	0 mg	0%
Iron	2.2 mg	10%
Potassium	180 mg	4%
* The % Daily Value (DV) tells you how much a nutrient in a serving of food contributes to a daily diet. 2,000 calories a day is used for general nutrition advice.		

Ingredients:

WATER, WHOLE WHEAT FLOUR, ENRICHED DURUM SEMOLINA (DURUM SEMOLINA WHEAT FLOUR, NIACIN, FERROUS SULFATE, THIAMINE MONONITRATE, RIBOFLAVIN, FOLIC ACID), EGGS.

CONTAINS: EGG, WHEAT

Case Weight	Case Cube
13 lbs.	.786 cu. ft.
Pallet TI x HI	Cases per Pallet
16 x 6	96
Case Dimensions (L x W x H)	
12.40" x 9.20" x 11.90"	